



GMT MONTHLY MEMBERSHIP PROGRESS REPORT

Results as of: 5/31/2018

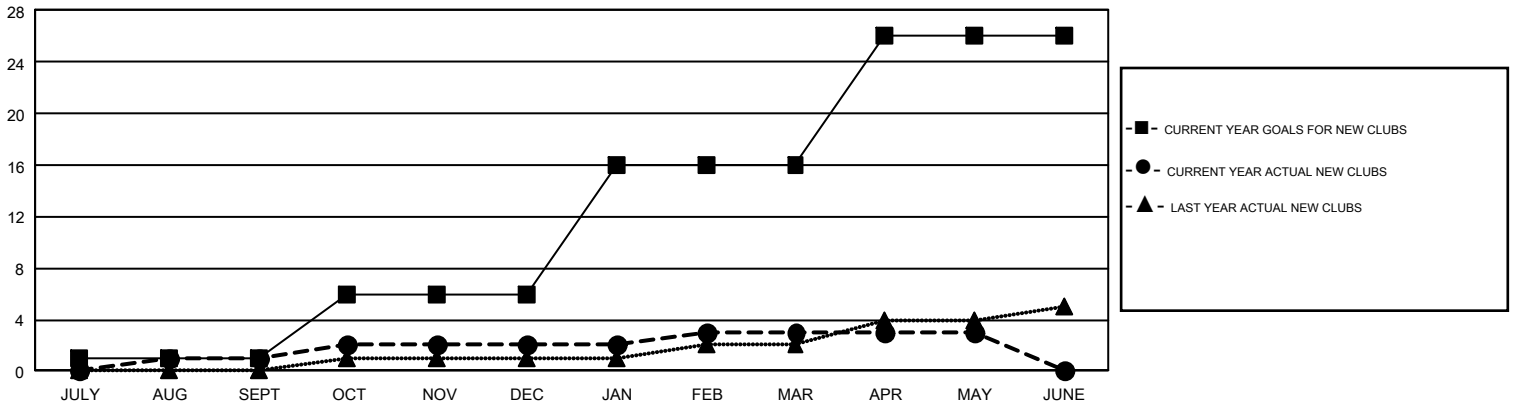
GMT Constitutional Area 4, Group A

GMT: ANTTI FORSELL

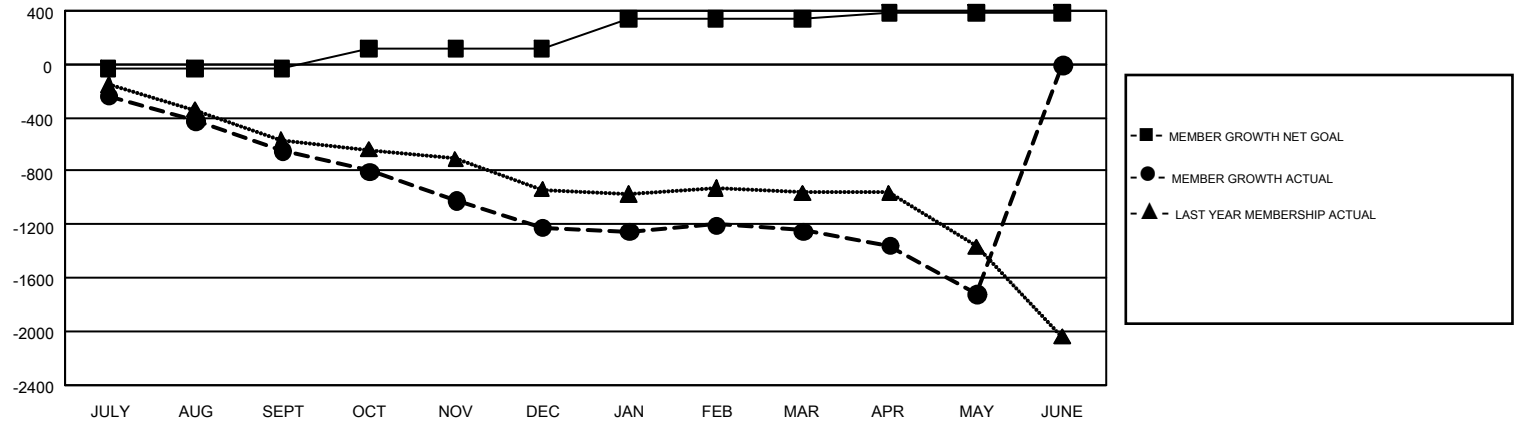
REPORT DOES NOT INCLUDE CLUBS IN UNDISTRICTED AREAS.

Clubs				Members			
RESULTS FOR 2017-2018				RESULTS FOR 2017-2018			
QUARTER	NEW CLUB GOAL	NEW CLUBS	DROPPED CLUBS	QUARTER	MEMBER GROWTH NET GOAL	MEMBER GROWTH ACTUAL	DROPPED MEMBERS ACTUAL (including transfers)
JULY/AUG/SEPT	1	1	19	JULY/AUG/SEPT	-35	471	1,011
OCT/NOV/DEC	5	1	11	OCT/NOV/DEC	155	770	1,279
JAN/FEB/MAR	10	1	9	JAN/FEB/MAR	223	1,127	1,031
APR/MAY/JUNE	10	0	2	APR/MAY/JUNE	44	434	885

GOALS AND ACTUAL NEW CLUBS CUMULATIVE



GOALS AND ACTUAL MEMBERS CUMULATIVE



DROPPED CLUBS: 41	1,167 CLUBS OF 2,248 ADDED 1 OR MORE NEW MEMBERS	GENDER DISTRIBUTION
DROPPED MEMBERS		MALE 41,501 (78.47%)
DECEASED 520		FEMALE 11,386 (21.53%)
CLUB CANCELLED 166	CLICK HERE FOR CUMULATIVE MEMBERSHIP DATA	TOTAL FAMILY UNIT MEMBERS 1,747
OTHER 3,520		FAMILY MEMBERS PAYING HALF DUES 874
TOTAL 4,206		